

GENERAL INFORMATION

25-Mile (Limited Distance) Riders

*****Please print any and all documents at home before you leave for the Cache Creek Ridge Ride. When you arrive at camp, the only items we will give to you are your rider card and your windshield card displaying your name and number should we need to find you.*****

Table of Contents:

This Page is Page 1	Page 1
Schedule	Page 2
Virtual Ride Meeting	Page 3
Check In Process	Page 4
Registration Verification	Page 5
Camping Process	Page 6
Base Camp Map	Page 7
Cowboy Camp Wisdom & Rules	Page 8
Crew Driving Directions	Page 9
Pre-Ride Vet Exam & Numbering Process	Page 10
Pre-Ride Vet-In Layout Map	Page 11
25-Mile Post-Ride Process	Page 12
Vet Check--Judge Davis Layout	Page 13
Finish--Cowboy Camp Vet Check Layout	Page 14
25-Mile Course Map	Page 15





SCHEDULE



Friday:

Rider Registration: 9 am - 6 pm

Vet In Begins: 2 pm until dark.

Volunteer Meeting: 7:00 pm at Ride Mgt HQ

Virtual Ride Meeting: Wednesday, May 1 @ 6:00 pm

Link to meeting can be found @ cachecreekridgeride.com

Saturday Start Times:

50 milers start at 5:30 am

25-mile Long Course Ride & Tie start at 7:00 am

25 milers start at 7:30 am

12-mile Short Course Ride & Tie start at 9:30 am

Intro Riders start at 10 am (vet in from 7-9:30 am)

Awards:

Intro Riders, 25 Mile Riders, 50 Mile Riders:

Pick up award at Mgt Trailer after you pass the post ride exam

Ride & Tie (Long & Short Course): 1:00 pm at Mgt Trailer
with Steve Shaw representing Ride & Tie Ass'n.

Dinner Service in Management Area

Saturday: 2:30-6:30

Riders: turn in your completed Evaluation Forms for Service

Volunteers: present wristband for service

Tickets for purchase on site @ \$25 each for others

Virtual Ride Meeting

Join the meeting Live:

Wednesday, May 1, 2024, 6:00 pm

Link can be found on our website: cachecreekridgeride.com
If you miss the meeting, you can see the recording on Facebook:
Cache Creek Endurance Ride

We have written down most of what you need to know and posted it on our website (if you've gotten this far, you know all this). It is important for you to attend our virtual ride meeting for 4 reasons:

1. You may read the packet, and we hope you do, but remembering written material can be sketchy. Thus, a second presentation is being done verbally and visually with explanations.
2. We may have updates to share closer to the ride, and this is our last chance to inform you of them before we leave home and are out of cell service.
3. The WEATHER will be more predictable this close to the ride, and that can change protocols at vet checks, so we wanted to check in with you so you can prepare properly.
4. You may have questions for us, and this meeting offers an opportunity to address your questions and concerns.

We have worked hard to capture a ride meeting in this written packet. The Management Team hosting the CCR are experienced Ride & Tie competitors. We know that it helps you to have as much information in advance of the Ride as we can provide. This packet will help you prepare, but the Virtual Meeting on Wednesday the 1st should also be considered required viewing for updates. See you soon AND thanks for joining us at the CCR!



Check in Process

25-Mile and 50-Mile Riders

Friday, May 3, 9 am - 6 pm

- When you arrive, pull into the upper Cowboy Camp landing.
 1. Stop at the first checkpoint and meet Pam Stalley, who will check you in to your ride.
 2. We will verify your registration information on your vet card. If you have changed to a different horse or mule you will be riding, we will make you a new vet card and update our data base records.
 3. If you are not on the registration list, you will need to complete an entry form, pay regular and late fees in order to proceed to camping.
 4. We will also give you a windshield card with your name and rider number on it. We ask that you display the card in the windshield of your vehicle in case we need to find you at your camp spot.
 5. You will also be given a wristband (with your rider number on it) which you will wear during your ride and serves as your award claim ticket.
 6. You will also be given a Ride Evaluation Form which we ask you complete after you finish your ride. This completed form serves as your dinner ticket. Please present it to the caterer to receive your dinner. The dinner starts at 2:30 and serves until 6:30. If you have additional people with you, you may purchase dinner tickets for them at this time for \$25 each.
 7. Once you have your wristband attached, pull into camp and park.
 8. Thank you for joining us at the 2024 Cache Creek Ridge Ride! 😊



Registration Verification

- ☺ Meet Ride Managers Pam Stalley and Jennifer Stalley Crenshaw, who will check you into the ride. First, we will check in Riders, then Volunteers who may be in your vehicle.

RIDERS:

1. Please be ready to verify your **horse information** so our records are accurate. Tell us if you have a horse change. If you are changing mounts, be prepared to provide the information on your new horse. We will create a new vet card and give it to you to take to the preride exam in base camp. We will also give you a windshield card, for your windshield in case we need to find you.
2. Also please verify your **ride distance**. If you want to change distances, it's ok, but it will cause a rider number change. We will create a new vet card for you, give it to you, and update our computer database.
3. If you have no changes, we will write your rider # on your wristband, hand you your rider card, and windshield card*. *We ask that you place your windshield card in your front windshield, so we can identify your rig should we need to find you.

VOLUNTEERS

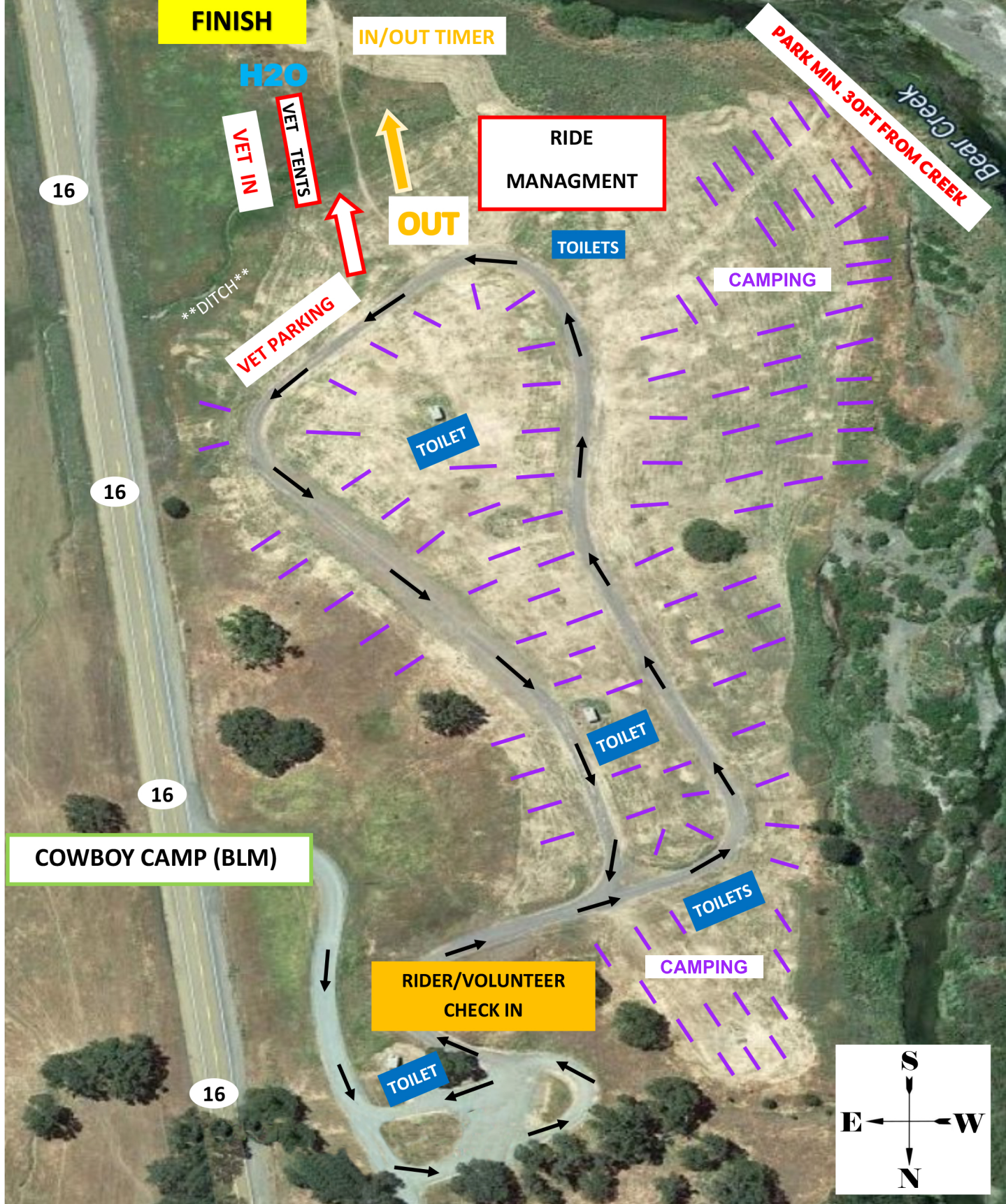
1. Provide us with your name, and we will present you with your volunteer t- shirt (please wear it on Saturday during the event, so we can find our volunteers).
2. You will also receive written instructions:
 - a. describing your role in the ride on Saturday
 - b. where you will report to help
 - c. when you should be there
 - d. a good idea of how long we will need your help
3. This information should not be new to you if you registered online as a volunteer. We will have sent an email confirming that you are ok with the assignment.



Camping Process

1. Congratulations, you are in at the Cache Creek Ridge Ride.
2. Park your rig using a pinwheel pattern—nose facing the gravel road you drove in on--not parallel to it. We have a sign demonstrating this at the entrance gate and in this digital packet.
3. Space your camp 25 feet from your neighbor's rig.
4. Set up your camp.
5. This is a dry camp, please bring your “human” drinking water with you to camp. Also, please haul as much horse drinking water with you as possible. We will refill troughs in camp but appreciate all you can do to help reduce the water runs to refill camp.
6. Please be respectful, kind and courteous.
7. Please spread manure and biodegradable waste (hay).
8. Bag your trash and haul it out with you.
9. Please keep dogs on leashes, horses on leads or safely contained.
10. We ask that you keep in mind that we are to LEAVE NO TRACE on all BLM property. Thank you!





— Park “PINWHEEL” style. **MAP IS NOT TO SCALE.** There is way more room for rigs than shown. This is simply an example of how to position your camps.



BASE CAMP



Cowboy Wisdom (advice) of the Cache Creek Ridge Ride (rule) Because rules are for a reason



- *Always look upstream before drinking the water.*
 - Likewise, thinking ahead... Trash goes into a **bag that is tied off** and that bag goes into the brick-red-colored trailer on your way out of camp. The trash travels 20 miles back to Williams, and we don't want to litter these beautiful hills all the way home.
- *You can't keep trouble from visitin', but you don't have to offer it a chair.*
 - We are still cutting down trees from the last wildfire. It wasn't our fault, but safety first; no campfires.
- *Man is the only critter who feels the need to label things weeds or flowers.*
 - Weed free or local hay only.
- *Good judgment comes from experience, and a lot of that comes from bad judgment*
 - Especially true if people have sponged out of the water. Do not sponge out of troughs.
- *If you get to thinkin' you're a person of some influence, try orderin' somebody else's dog around.*
 - All dogs must be on leashes at all times.
- *You are not being diplomatic just because you put **please** in front of "Shut the hell up."*
 - Be polite and cheery with all of the volunteers.
- *Going fast while you are lost won't help a bit.*
 - Use your brain. First think, would an idiot do this thing? If an idiot would, do not proceed doing that thing.
- *Don't run down narrow stairs if you're wearing spurs.*
 - Never, under any circumstances tell someone else where they're supposed to be! By the time you've "figured out" where they should be, you're off course. Pay attention to yourself and your ribbons only.
- *Wide open spaces don't breed no chatter boxes.*
 - Generators off by 9:30 pm. It's an early start on Saturday.
- *Sometimes you get, and sometimes you get got.*
 - We have seen rattlesnakes and lots of ticks. Rattlesnakes will get out of you way (most of the time), but use repellent for the ticks.



Always drink your whiskey with your gun hand to show your friendly intentions. Color don't matter if the horse don't trot ~~ that one's just for fun!

25-Mile (Limited Distance) Ride Crew Driving Directions

Cowboy Camp (Base Camp, Start and Finish)

From I-5

At Williams, take Hwy 20 West 18 miles to the intersection of Hwy 16. Turn left (South). Cowboy Camp will be on the right in about a mile.

From Capay Valley

After Rumsey, continue 18 miles North on Hwy 16. Cowboy Camp will be on the left. If you reach Hwy 20, you have gone too far.

Allow at least 1 ½ hours from Davis to reach Cowboy Camp

Vet Check at 12.5 miles—Judge Davis (30 min hold)

From Cowboy Camp, travel North on Hwy 16 to Hwy. 20. Turn left (West) and travel 6 miles to the Judge Davis Trail Head, on the left. Parking GPS: N 39.008725° W 122.415662°

The trailhead is on the left. Be careful as you need to slow down on the downhill approach and make a left turn into the lot. Limited parking; please carpool.



Pre-Ride Vet-In Process

Opens at 2 pm on Friday, May 3

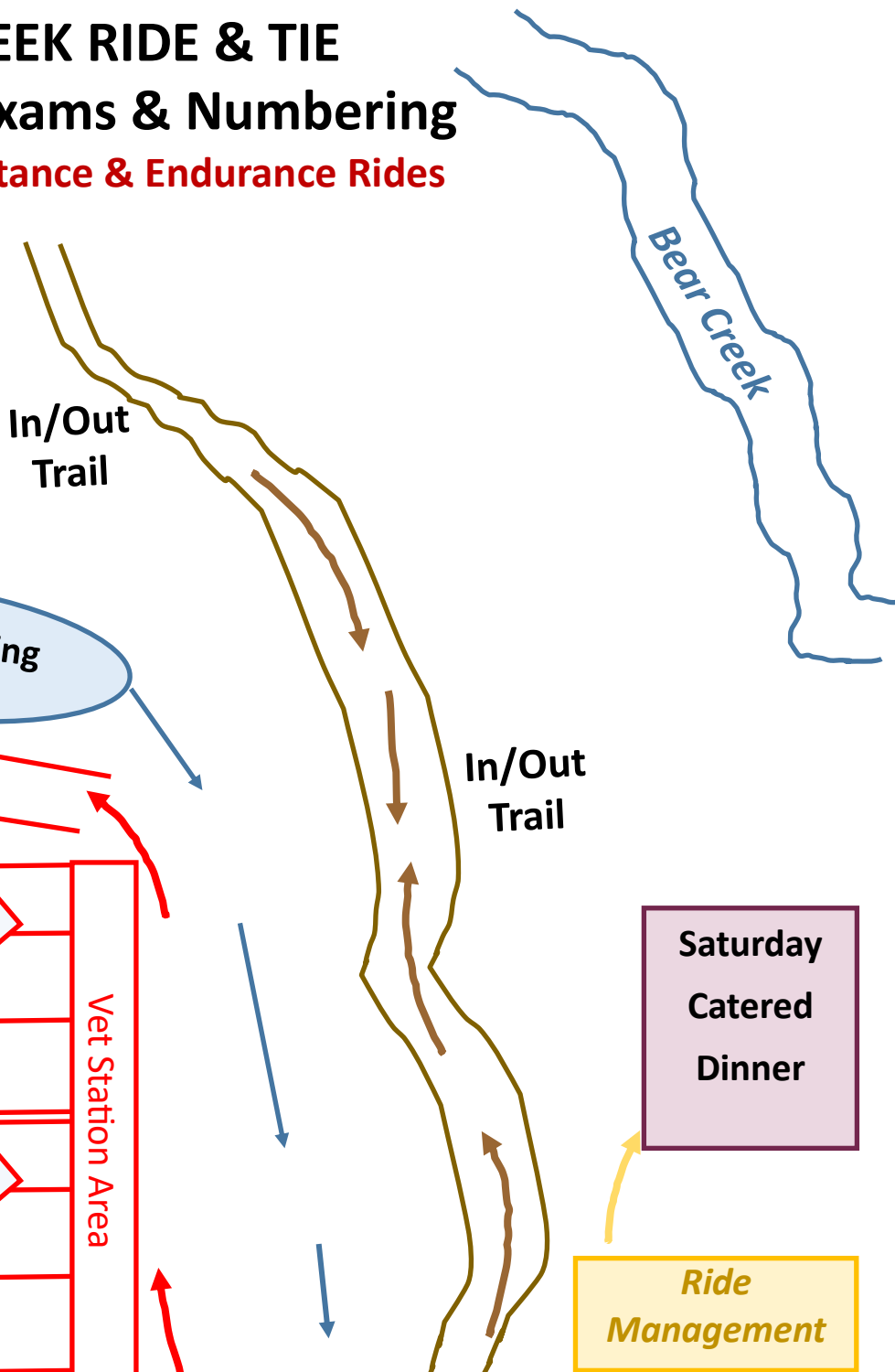
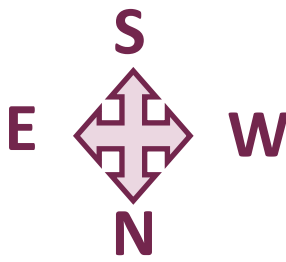
1. Watch for a short line before you take your horse to the vet area to avoid crowding. We will have 6 veterinarians scheduled this weekend.
2. Take your rider card and your horse to the vet area.
3. If you are not standing with a “buddy horse”, maintain a distance of about 6 feet from the next horse’s tail. Do not crowd.
4. Present your horse to the vet while standing on the opposite side of the horse from the vet and his/her scribe.
5. Give your vet card to the scribe.
6. Retrieve your rider card after the vet completes the exam and the scribe has filled in the information from the vet’s exam.
7. Take your horse and rider card to the volunteer who will put your rider # on your horse with a cattle marker.
8. You are ready to start on Saturday morning.
9. If your horse does not pass the pre ride vet exam, see ride management to process your “Did Not Start” status. This is **VERY IMPORTANT** as we need to keep track of our riders, and you will receive a refund of your entry fee less a \$30 processing fee.
10. Enjoy some relaxation time. You will have a great ride through what used to be working cattle ranch country. Be kind to all the people you see and enjoy the open air and a good traveling companion—your four-legged friend.



CACHE CREEK RIDE & TIE

Pre-Ride Vet Exams & Numbering

Limited Distance & Endurance Rides



Horse Numbering

Riders EXIT

Trot Lanes

Trot Lanes

Vet Station Area

Riders ENTER

Back To Camp

Saturday
Catered
Dinner

Ride
Management

Awards Pickup

Camping

Very Big Ditch

25 Mile Post-Ride Process

You Have Crossed the Finish Line

What Now?

- 1) This is a 4-step process:
 - a) Cross the finish line and present your vet card so **finish time is recorded**
 - b) Your horse must reach pulse criteria within 30 minutes of the **finish time**
 - c) Your placing in the ride is determined by the **pulse recovery time**
 - d) Your horse must pass a post ride vet exam within one hour of the **finish time**

Here's how this is done:

- 2) Move up to the cooling area to cool your horse. It's a walk of about 50 yards. Remember, your horse has **30 minutes** from the **finish time** recorded on your card to meet pulse criteria. When the horse's pulse is "at criteria", call for a P & R person to take the pulse and call for your time.
- 3) Have your vet card ready to present to the P & R volunteer and keep it available for the veterinarian's scribe for the next step: the **post ride completion exam**.
- 4) You have one hour from your finish time to present your horse for the post ride completion exam. If there happens to be a line in the vetting area and you are getting close to your 1-hour deadline for completion of your post ride exam, **PLEASE RAISE YOUR HAND IN LINE TO BE BUMPED UP!**
- 5) Present your horse to the veterinarian. After the vet completes the post ride exam, the scribe will keep your card. Take a photo of it if you like.
- 6) If your horse passes the vet exam, make your horse comfortable at your camp area. When you are ready, go to the awards table, turn in your "validated" wristband, and collect your finish award at the Management area.
- 7) Your completed Evaluation Form is your "ticket" for the post ride food. The caterer will start serving dinner at 2:30 and stop at 6:30. If you have others with you, you may purchase additional tickets for \$25/each at the Management HQ.
- 8) We hope you had a great adventure at the CCRR! Thank you for coming.



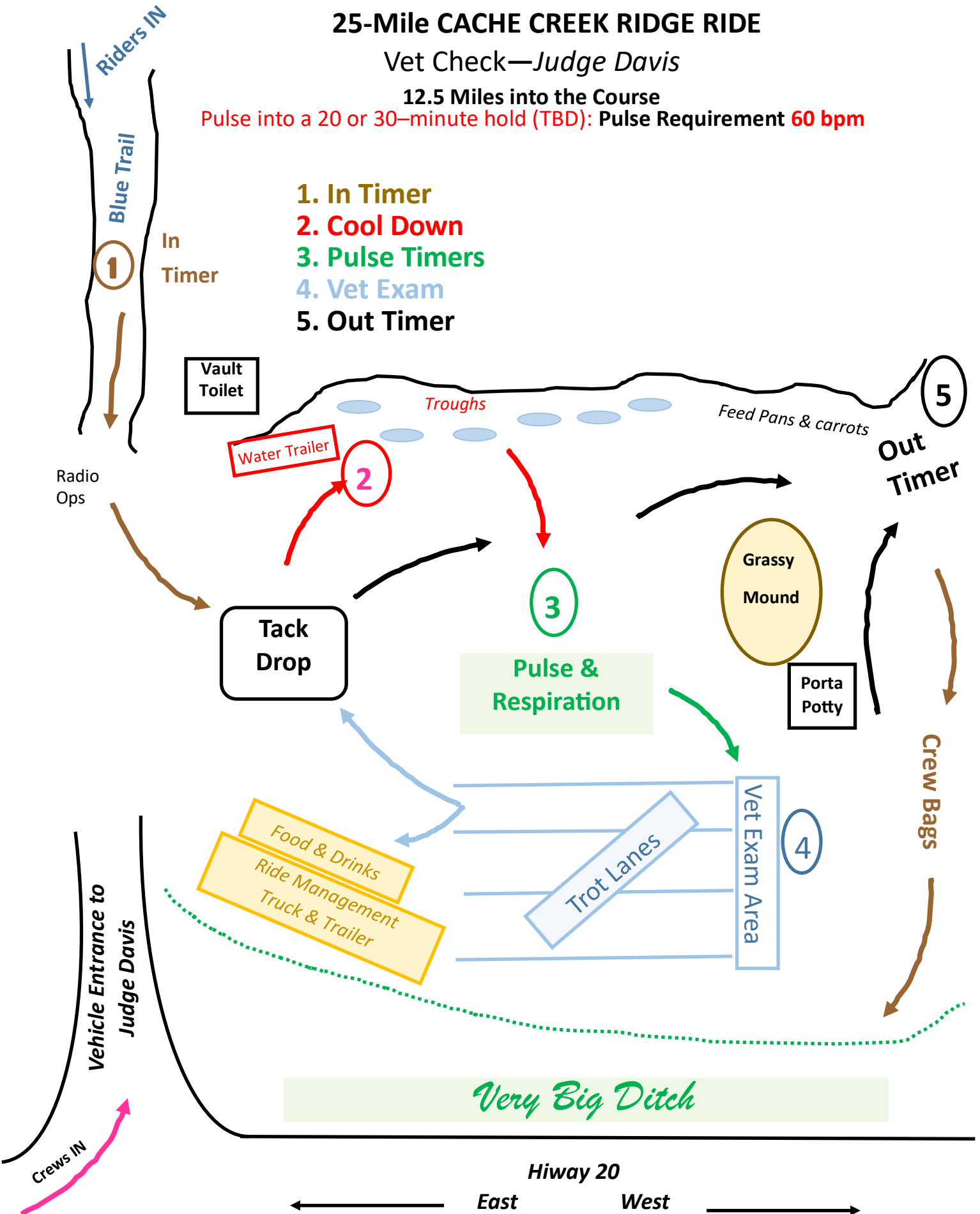
25-Mile CACHE CREEK RIDGE RIDE

Vet Check—*Judge Davis*

12.5 Miles into the Course

Pulse into a 20 or 30-minute hold (TBD): Pulse Requirement **60 bpm**

1. In Timer
2. Cool Down
3. Pulse Timers
4. Vet Exam
5. Out Timer



CACHE CREEK RIDGE RIDE

Finish—Cowboy Camp

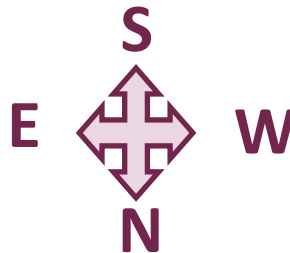
LD & ENDURANCE RIDES



STOP

FINISH TIMER

1



Bear Creek

Out Trail

Out Trail

Cooling Area & Pulse Timers

2

3

1. Finish Line

2. Cool Down

3. Pulse Timers

4. Vet Exam

5. Awards/Mgt

Riders to Vet Exam

Feed Pans & carrots

Trot Lanes

Trot Lanes

Vet Station Area

4

Saturday
Catered
Dinner

B/C JUDGING

Ride
Management

Radio
Ops

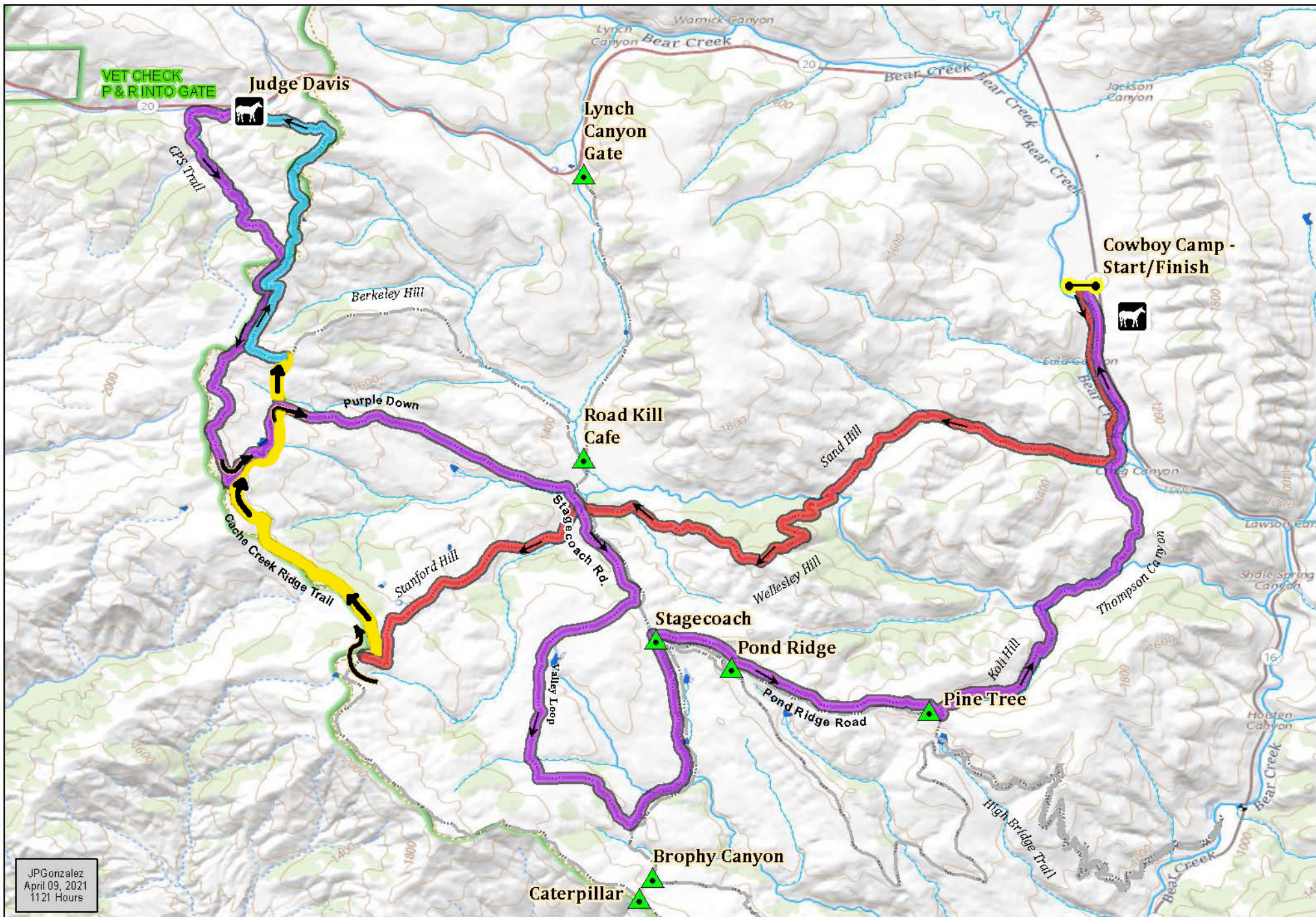
Back
To
Camp

5

Awards Pickup

Very Big Ditch

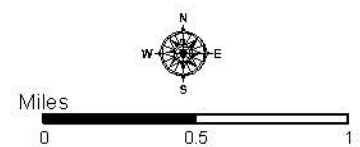
Camping



JPGonzalez
 April 09, 2021
 11:21 Hours

Legend

- | | | | | | | | |
|--|--------------------|--|-------------------|--|--------------|--|-----------|
| | Red | | Yellow | | Start/Finish | | Vet Check |
| | Blue | | Purple | | Check point | | |
| | Caution sharp turn | | Navigation arrows | | | | |



Cache Creek Ridge Ride
 25 Mile Trail
 Limited Distance